

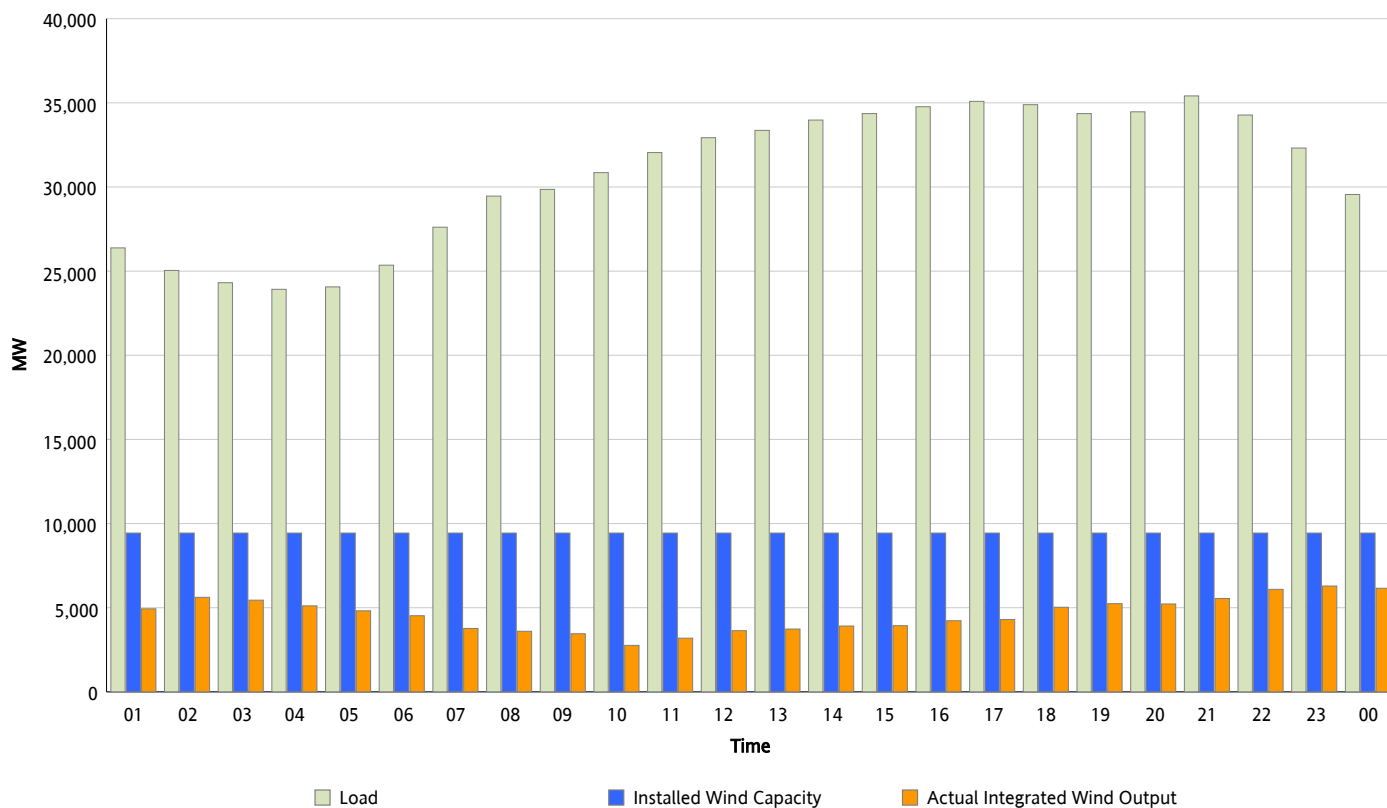


## ERCOT Grid Operations

### Wind Integration Report : 03/13/2012

Peak Load	35,411 MW
Load Peak Hour (HE)	21
Wind Over Peak	5,551 MW
Wind Record 03/07/12	7,599 MW
Max Wind Value*	6,399 MW
Wind Peak Time	22:21
Wind Integration %	19.4 %

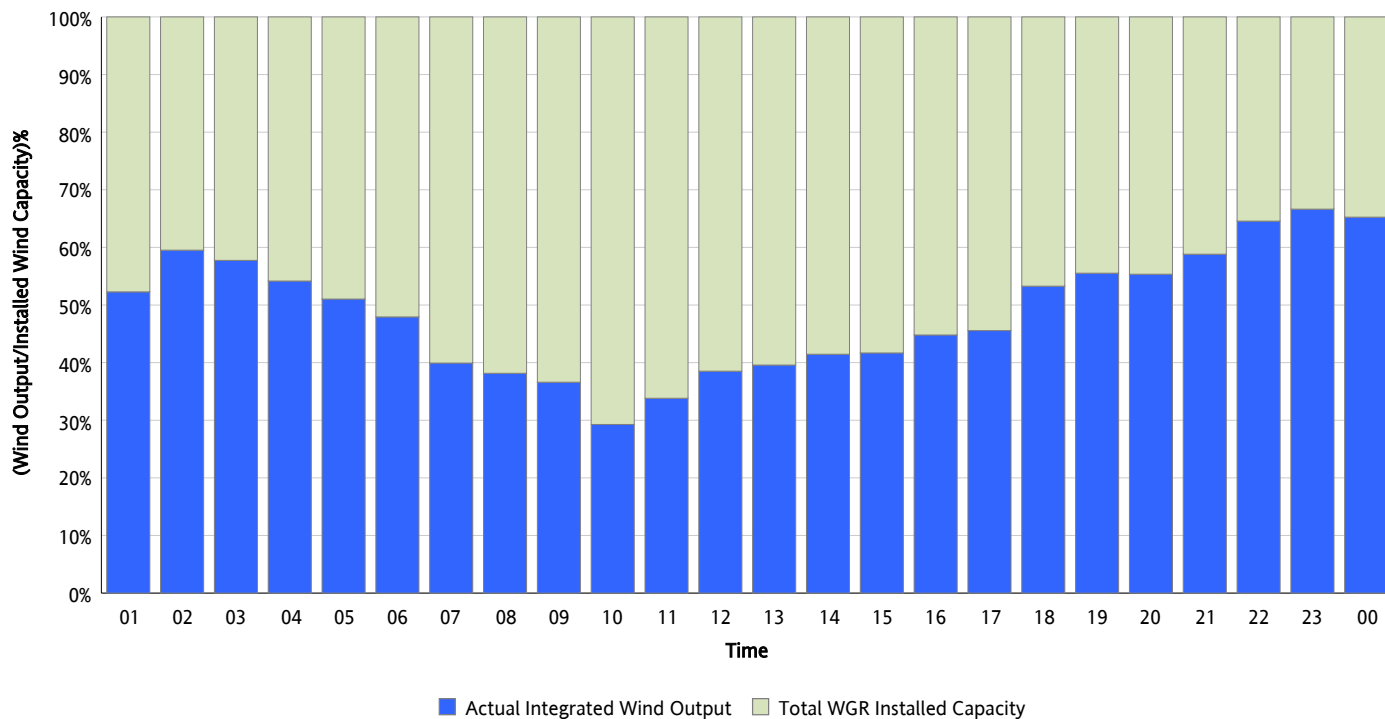
**Hourly Average Actual Load vs. Actual Wind Output**  
**03/13/2012**



*\* Wind Record and Wind Max represent instantaneous values and the rest of the values are integrated over the hour*

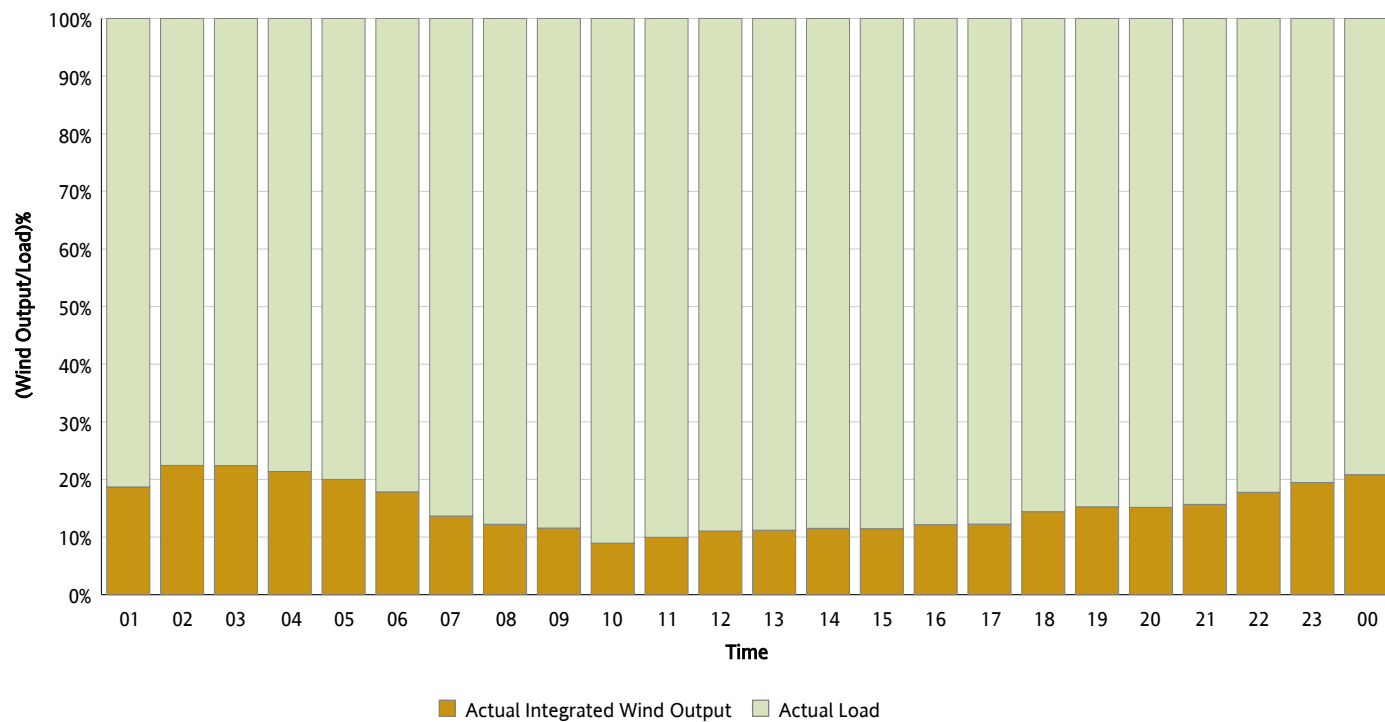
## Actual Wind Output as a Percentage of the Total Installed Wind Capacity

03/13/2012



## Actual Wind Output as a Percentage of the ERCOT Load

03/13/2012



## ERCOT Load vs. Actual Wind Output

03/06/2012 - 03/13/2012

